

**Summary analysis**

23<sup>rd</sup> November 2015, Nifty Nov Future CMP: 7851.25

Trend: **UP** since 19<sup>th</sup> Nov; **Position: Long; Entered at: 7856.00 on 19<sup>th</sup> Nov**

RECOMMENDATION: HOLD WITH STOP AND REVERSE BELOW 7725.00 ON CLOSING

Current Trade -5(open) |Points Gained in recent trades: +215, +290,-27,-11

Our trend forecasting model turned bullish since 19<sup>th</sup> October 2015. **To change this outlook market need to move below 7725.00**

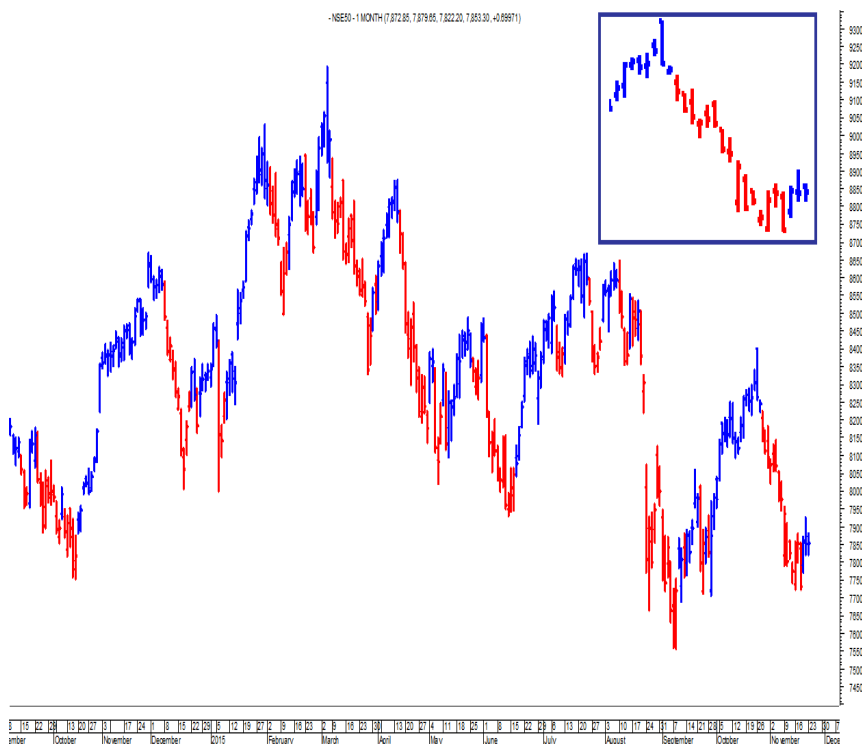
Volatility is high as compared to the average volatility over the last 10 periods.

Advance decline curve was in favor of bears with advance decline ratio of 22:27

Spot Nifty closed at 7849.25 down by 7.30 point or 0.09% and Sensex closed at 25819.34 down by 49.15 point or 0.19%. Midcap index closed at 10897.66 up by 39.25 point or 0.36% and Small cap index closed at 11419.59 up by 51.88 point or 0.46%.

**Trend Analysis:** Both intermediate and long term trend are bullish and short term trend has turned bearish since 28<sup>th</sup> October.

**Important Level:** 7725.00



Compensation of our Research Analysts is not based on any specific merchant banking, investment banking or brokerage service transactions. SPA Securities may have issued other reports in the past that are inconsistent with and reach different conclusion from the information presented in this report.

SPA Securities, its affiliates and employees may, from time to time, effect or have effected an own account transaction in, or deal as principal or agent in or for the securities mentioned in this document. They may perform or seek to perform investment banking or other services for, or solicit investment banking or other business from, any company referred to in this report.

The user should consult their own advisors to determine the merits and risks of investment and also read the Risk Disclosure Documents for Capital Markets and Derivative Segments as prescribed by Securities and Exchange Board of India before investing in the Indian Markets.

A graph of daily closing prices of securities is available at [www.nseindia.com](http://www.nseindia.com) and <http://economictimes.indiatimes.com/markets/stocks/stock-quotes>. (Choose a company from the list on the browser and select the “three years” icon in the price chart).

SPA Securities plans to register itself as a Research Entity under the SEBI (Research Analysts) Regulations, 2014.

**Disclaimers in respect of jurisdiction**

This report is not directed to, or intended for distribution to or use by, any person or entity who is a citizen or resident or located in any locality, state, country or other jurisdiction where such distribution, publication, reproduction, availability or use would be contrary to law or regulation or what would subject SPA Securities or its affiliates to any registration or licensing requirement within such jurisdiction. If this report is inadvertently sent or has reached any individual in such country, especially, USA, the same may be ignored and brought to the attention of the sender. This document may not be reproduced, distributed or published for any purposes without prior written approval of SPA Securities.

**List of Associates as per SEBI (Research Analyst) Regulations, 2014**

- SPA Insurance Broking Services limited

**Statements on ownership and material conflicts of interest, compensation - SPA and Associates**

<b>Disclosure of interest statement</b>	<b>Yes/No</b>
<b>SPA Securities/its Affiliates/Analyst/his or her Relative financial interest in the company</b>	No
<b>SPA Securities/its Affiliates/Analyst/his or her Relative actual/beneficial ownership of more than 1% in subject company at the end of the month immediately preceding the date of the publication of the research report or date of public appearance.</b>	No
<b>Investment banking relationship with the company covered</b>	No
<b>Any other material conflict of interest at the time of publishing the research report</b>	No
<b>Receipt of compensation by SPA Securities or its Affiliated Companies from the subject company covered for in the last twelve months:</b> <ul style="list-style-type: none"> <li>• Managing/co-managing public offering of securities</li> <li>• Investment banking/merchant banking/brokerage services</li> <li>• products or services other than those above</li> <li>• in connection with research report</li> </ul>	No
<b>Whether Research Analyst has served as an officer, director or employee of the subject company covered</b>	No
<b>Whether the Research Analyst or Research Entity has been engaged in market making activity of the Subject Company;</b>	No

For statements on ownership and material conflicts of interest, compensation, etc. for individual Research Analyst(s), please refer to each specific research report.