

Nifty Daily: CMP 6036



Technical Outlook

Long Term	Up
Medium Term	Down
Short Term	Down
Intraday (5 min.)MACD	Is in Buy mode
Support I	5970
Support II	5940
Resistance I	6040
Resistance II	6180

Last Trade

Hold the long entered around 5990-6010 with stop loss at 5965 for a target of 6150

Stock Recommendation: Buy M&M (LTP: 895.00)



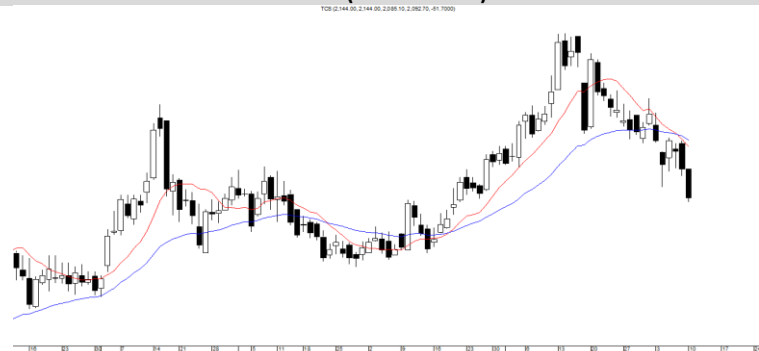
Technical Outlook

Long Term	Down
Medium Term	Up
Short Term	Up
Intraday (5 min.)MACD	Is in Buy mode
Support	890
Resistance	897

Buy/Sell	Trigger Price	Target 1	Target 2
Buy	Above 897	907	913

Buy/Sell	Trigger Price	Target 1	Target 2	Stop Loss	Time Frame
Buy	Above 897	907	913	890	Intraday

Stock Recommendation: Sell TCS (LTP: 2092.55)



Technical Outlook

Long Term	up
Medium Term	Down
Short Term	Down
Intraday (5 min.)MACD	Is in Sell mode
Support	2085
Resistance	2100

Buy/Sell	Trigger Price	Target 1	Target 2	Stop Loss	Time Frame
Buy	Below 2085	2067	2045	2105	Intraday

Buy/Sell	Trigger Price	Target 1	Target 2	Stop Loss	Time Frame
Buy	Below 2085	2067	2045	2105	Intraday

DISCLAIMER: The trading ideas discussed or recommended in this report may not be suitable for all investors. Investors should use this research as one input into formulating an investment opinion. Additional inputs should include, but are not limited to, the review of other. This is not an offer (or solicitation of an offer) to buy/sell the securities/instruments mentioned or an official confirmation. Spa Securities Limited is not responsible for any error or inaccuracy or for any losses suffered on account of information contained in this report. This report does not purport to be offer for purchase and sale of share/ units. We and our affiliates, officers, directors, and employees, including persons involved in the preparation or issuance of this material may: (a) from time to time, have long or short positions in, and buy or sell the securities thereof, of company (is) mentioned herein or (b) be engaged in any other transaction involving such securities and earn brokerage or other compensation discussed herein or act as advisor or lender or borrower to such company (is) or have other potential conflict of interest with respect to any recommendation and related information and opinions. The same persons may have acted upon the information contained here. No part of this material may be duplicated in any form and/or redistributed without Spa Securities Limited' prior written consent.